

Service Manual

Model: KP638

CONTENTS

	PAGE
SPEC	2 - 5
Block Diagram.....	6
Wring Drawing.....	7
Schematic Diagrams.....	8 - 15
Printed Circuit Boards.....	16 - 20
Exploded View.....	21

永 福 电 子 有 限 公 司

YUNG FU ELECTRONICS LTD

Model NO: KP638

Date:

Section: FM TUNER

Page: 1 of 4

Measuring Items	Condition	Unit	Normal	Limit	Test Data		
					1	2	3
Tuning Frequency Range	Low End	MHz	87.5	+/-0.35			
	High End	MHz	108	+/-0.5			
Max. Sensitivity	90MHz	dB		18			
	98MHz	dB		18			
	106MHz	dB		18			
-30dB Quieting S/N Sensitivity	90MHz	dB		26			
	98MHz	dB		26			
	106MHz	dB		26			
max Output Power 75KHz Dev	98MHz	W	80	70			
-6dBAudio Fidelity	Low Freq	Hz	100	150			
	High Freq	KHz	5	4			
S/N Ratio with 1mV	98MHz	dB	40	35			
Auto Tuning Stop(Seek) Sensitivity	90MHz	dB		26			
	98MHz	dB		26			
	106MHz	dB		26			

Test Conditions

Approved By:

- 1.AC Voltage : 100—240V
- 2.Standard Output : 500 mW
- 3.Speaker impedance: 3 OHM

永福电子有限公司

YUNG FU ELECTRONICS LTD

Model NO: KP626

Date:

Section: BASS

Page: 2 of 4

Measuring Items	Condition	Unit	Normal	Limit	Test Data		
					1	2	3
BASS		dB		≥ 3			
		dB					

Section: USB

Page: 2 of 4

Measuring Items	Condition	Unit	Normal	Limit	Test Data		
					1	2	3
Max Power O/P at Headphone							
	1KHz (0dB)	W	85	78			
S/N							
	1KHz (0dB)	dB	50	38			
Max Hum		mV	20	40			
Min Hum		mV		≤ 12			
10% THD Output Power (0dB)	1KHz	W		78			

Test Conditions

Approved By:

- 1.AC Voltage : 100—240V
- 2.Standard Output : 500 Mw
- 3.Speaker impedance: 3 OHM

永福电子有限公司

YUNG FU ELECTRONICS LTD

Model NO: KP638

Date:

Section: AUX input700mv

Page: 3 of 4

Measuring Items	Condition	Unit	Normal	Limit	Test Data		
					1	2	3
Max Power O/P at Headphone	1KHz (0dB)	W	85	78			
S/N	1KHz (0dB)	dB	50	38			
Max Hum		mV	20	40			
Min Hum		mV		≤12			
10% THD Output Power (0dB)	1KHz	W		78			

Test Conditions

Approved By:

- 1.AC Voltage : 100—240V
- 2.Standard Output : 500 Mw
- 3.Speaker impedance: 3 OHM

永福电子有限公司

YUNG FU ELECTRONICS LTD

Model NO: KP638

Date:

Section: BLUETOOTH

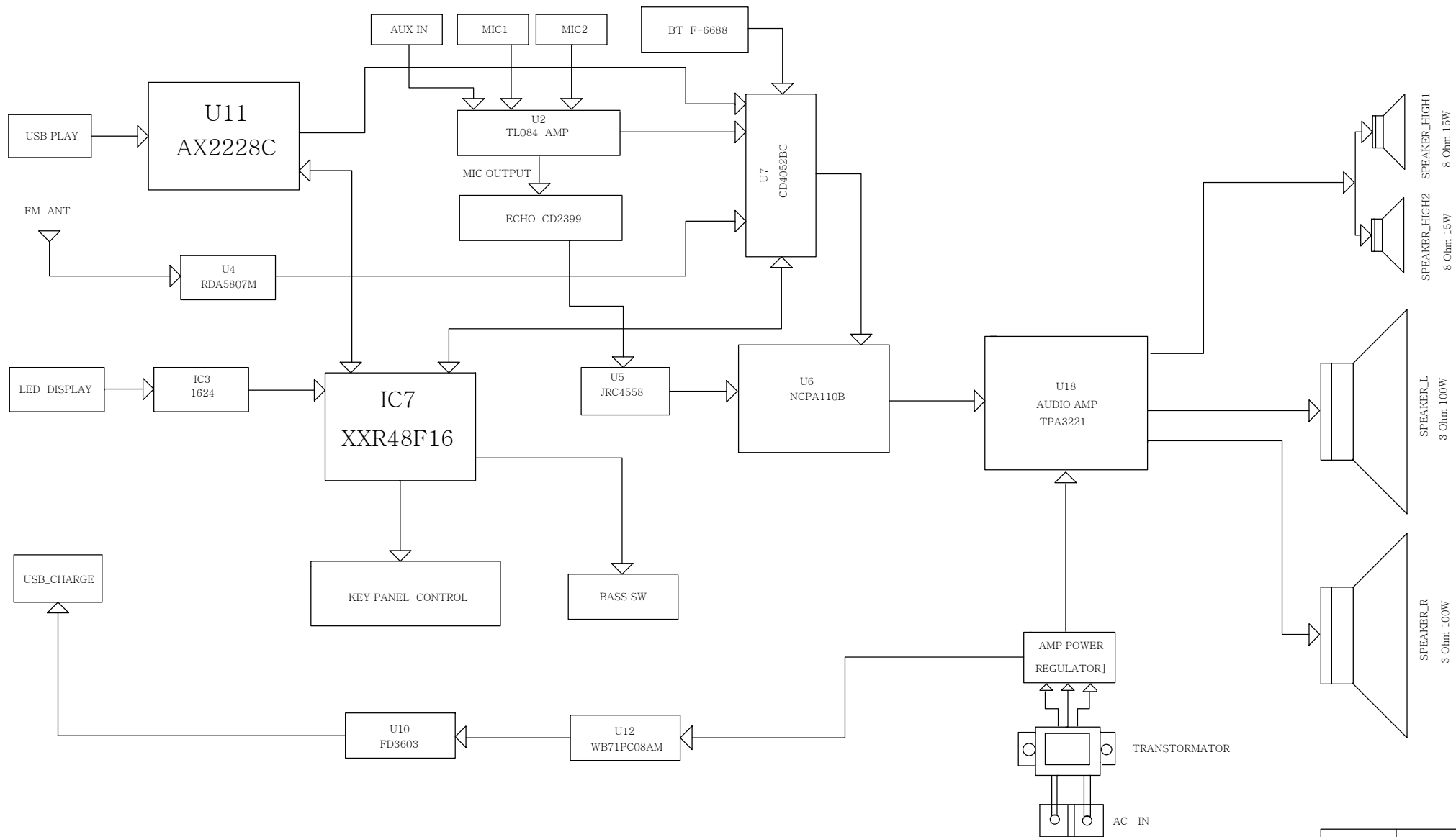
Page: 4 of 4

Measuring Items	Condition	Unit	Normal	Limit	Test Data		
					1	2	3
Max Power O/P at Headphone							
	1KHz (0dB)	W	85	78			
S/N							
	1KHz (0dB)	dB	50	38			
Max Hum		mV	20	40			
Min Hum		mV		≤12			
10% THD Output Power (0dB)	1KHz	W					
Max o/p Dis	1KHz	%		≤22			

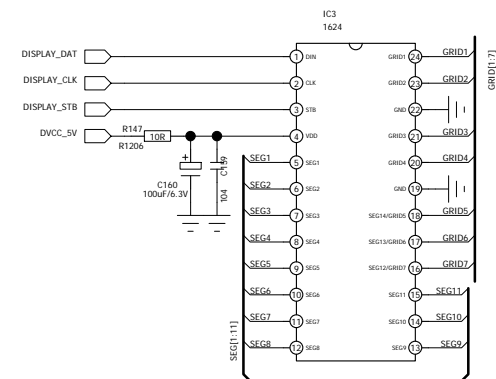
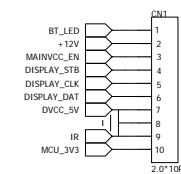
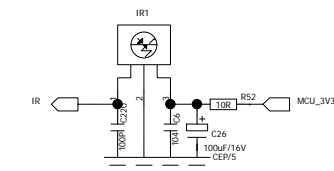
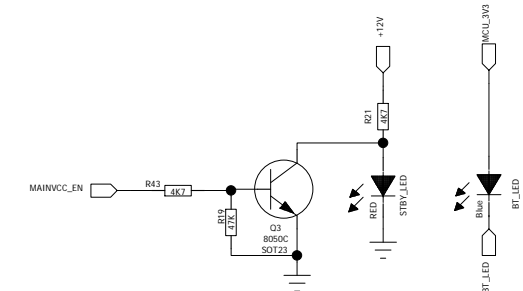
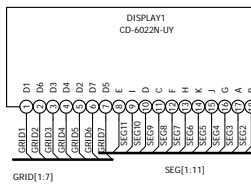
Test Conditions

Approved By:

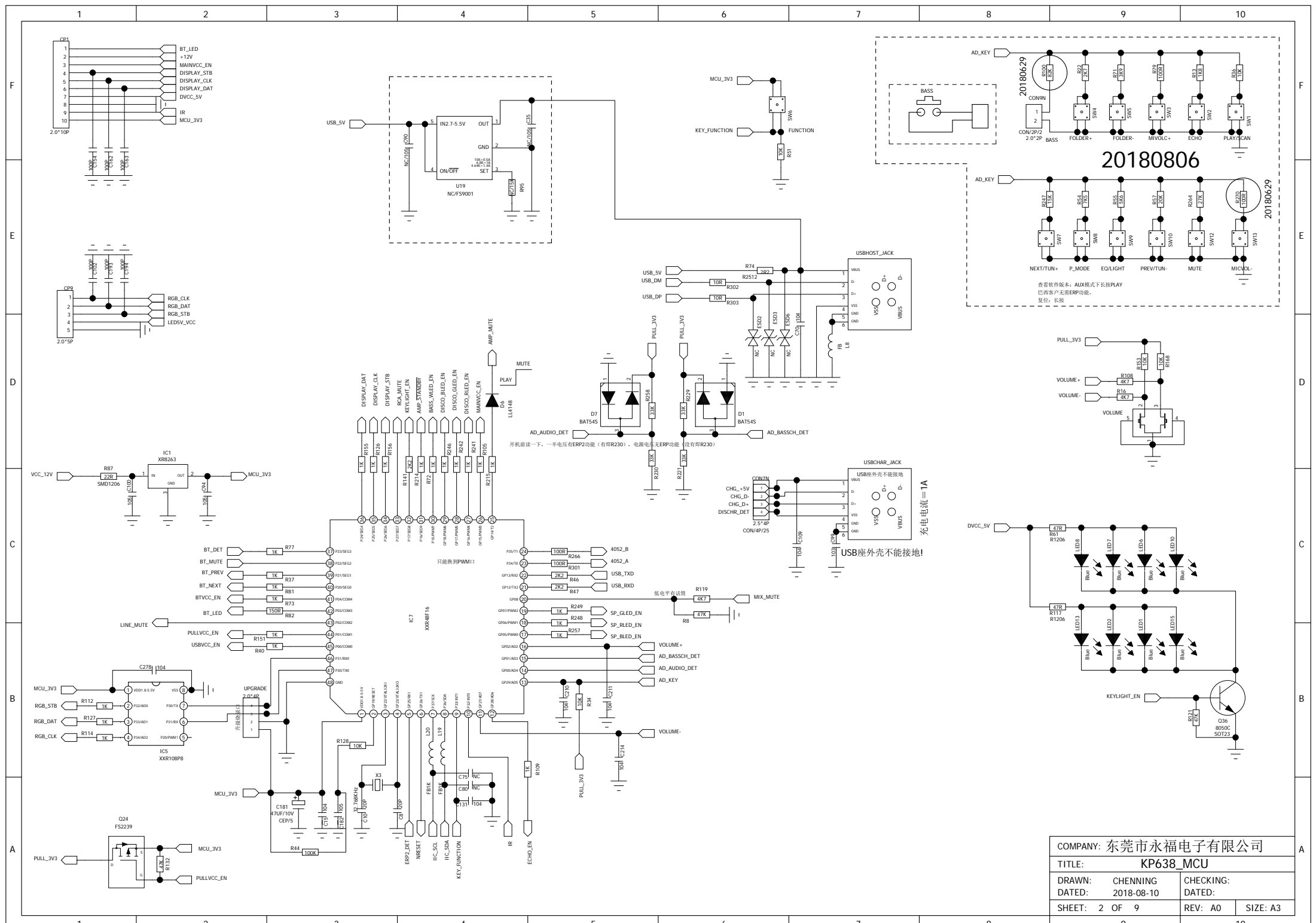
- 1.AC Voltage : 100—240V
- 2.Standard Output : 500 Mw
- 3.Speaker impedance: 3 OHM



MODEL	KP638
TITLE	BLOCK DIAGRAM
REV	00
DRAWN	
DATE	2018-07-03



COMPANY: 东莞市永福电子有限公司			
TITLE: KP638_DIPSLAY			
DRAWN: CHENNING		CHECKING:	
DATED: 2018-08-10		DATED:	
SHEET: 1 OF 9		REV: A0	SIZE: A3

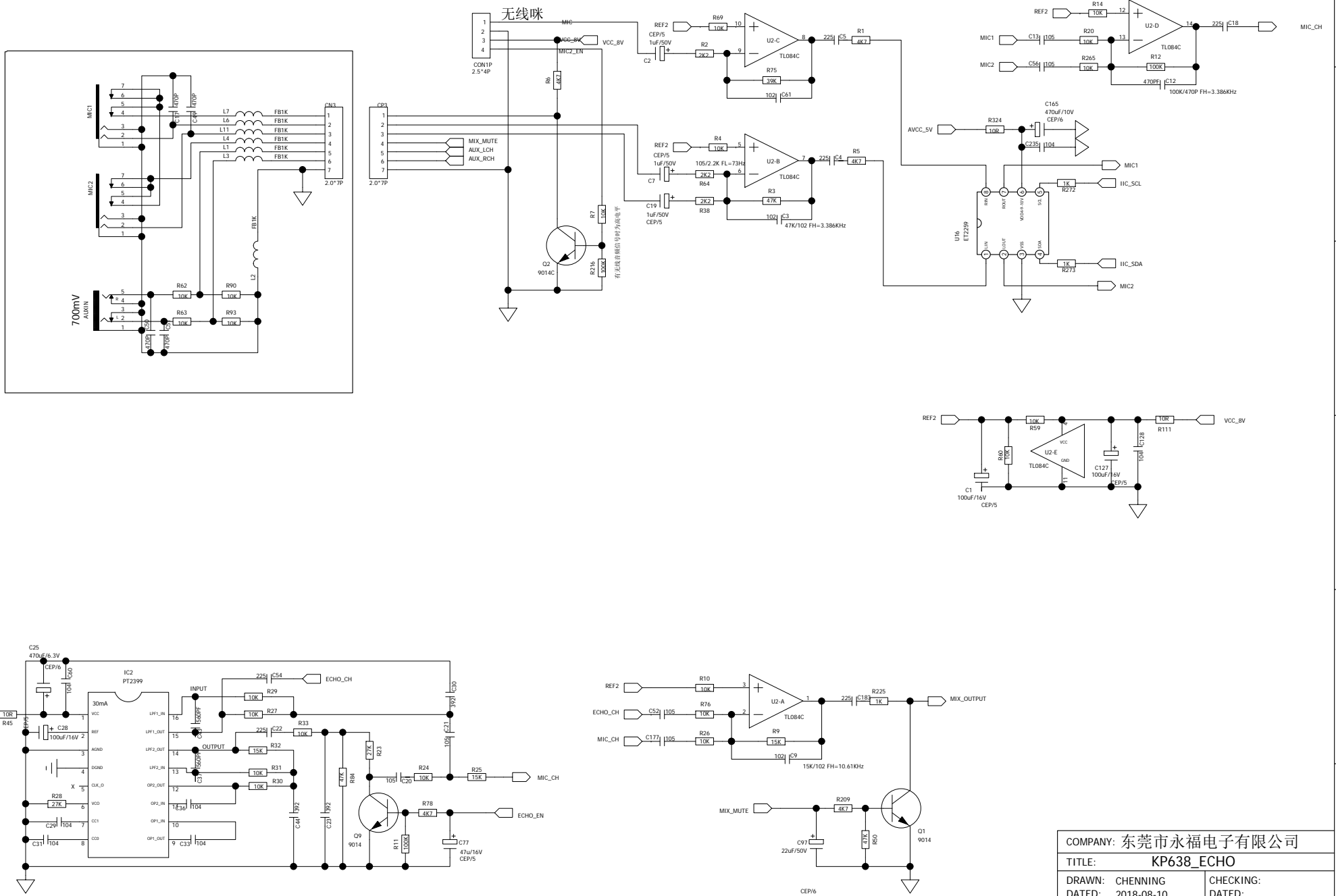


COMPANY: 东莞市永福电子有限公司			
TITLE: KP638_MCU			
DRAWN: CHENNING	CHECKING:		
DATED: 2018-08-10	DATED:		
SHEET: 2 OF 9	REV: A0	SIZE: A3	



F
E
D
C
B
A

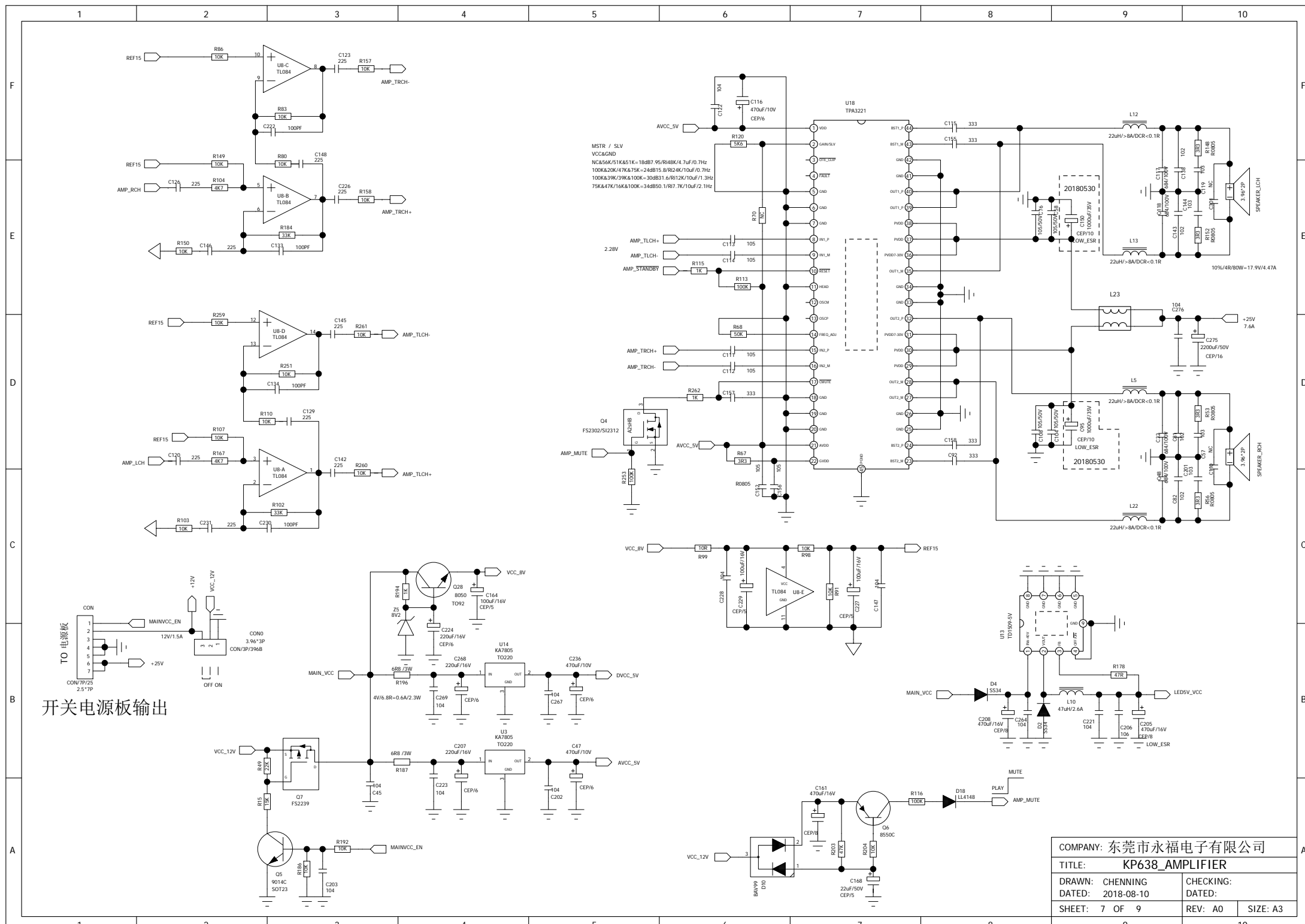
F
E
D
C
B
A



COMPANY: 东莞市永福电子有限公司			
TITLE: KP638_ECHO			
DRAWN: CHENNING		CHECKING:	
DATED: 2018-08-10		DATED:	
SHEET: 4 OF 9		REV: A0	SIZE: A3



REV: A0	SIZE: A3
---------	----------



开关电源板输出

COMPANY: 东莞市永福电子有限公司

TITLE: KP638_AMPLIFIER

DRAWN: CHENNING

DATED: 2018-08-10

SHEET: 7 OF 9

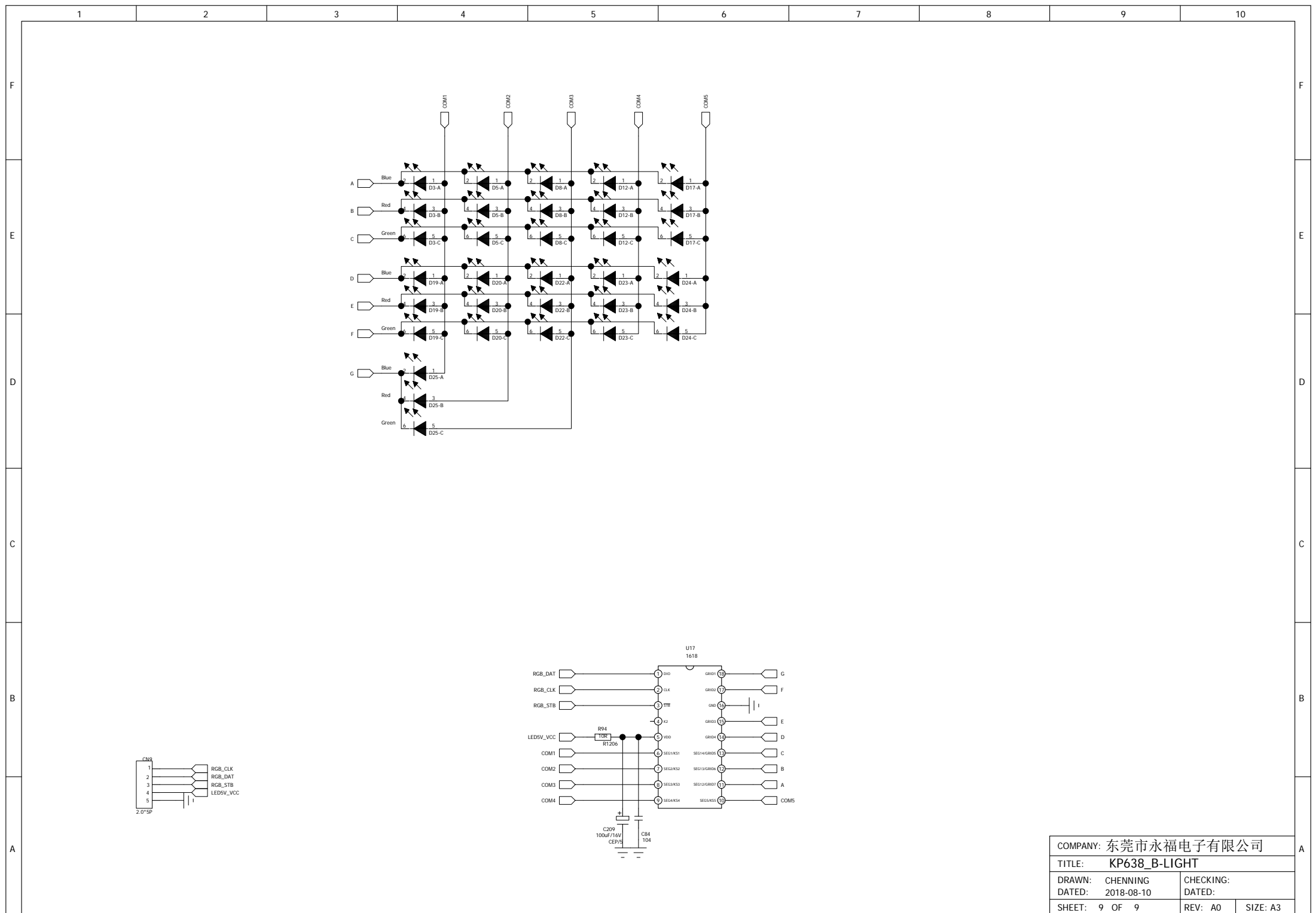
CHECKING:

DATED:

REV: A0

SIZE: A3





COMPANY: 东莞市永福电子有限公司

TITLE: KP638_B-LIGHT

DRAWN: CHENNING

DATED: 2018-08-10

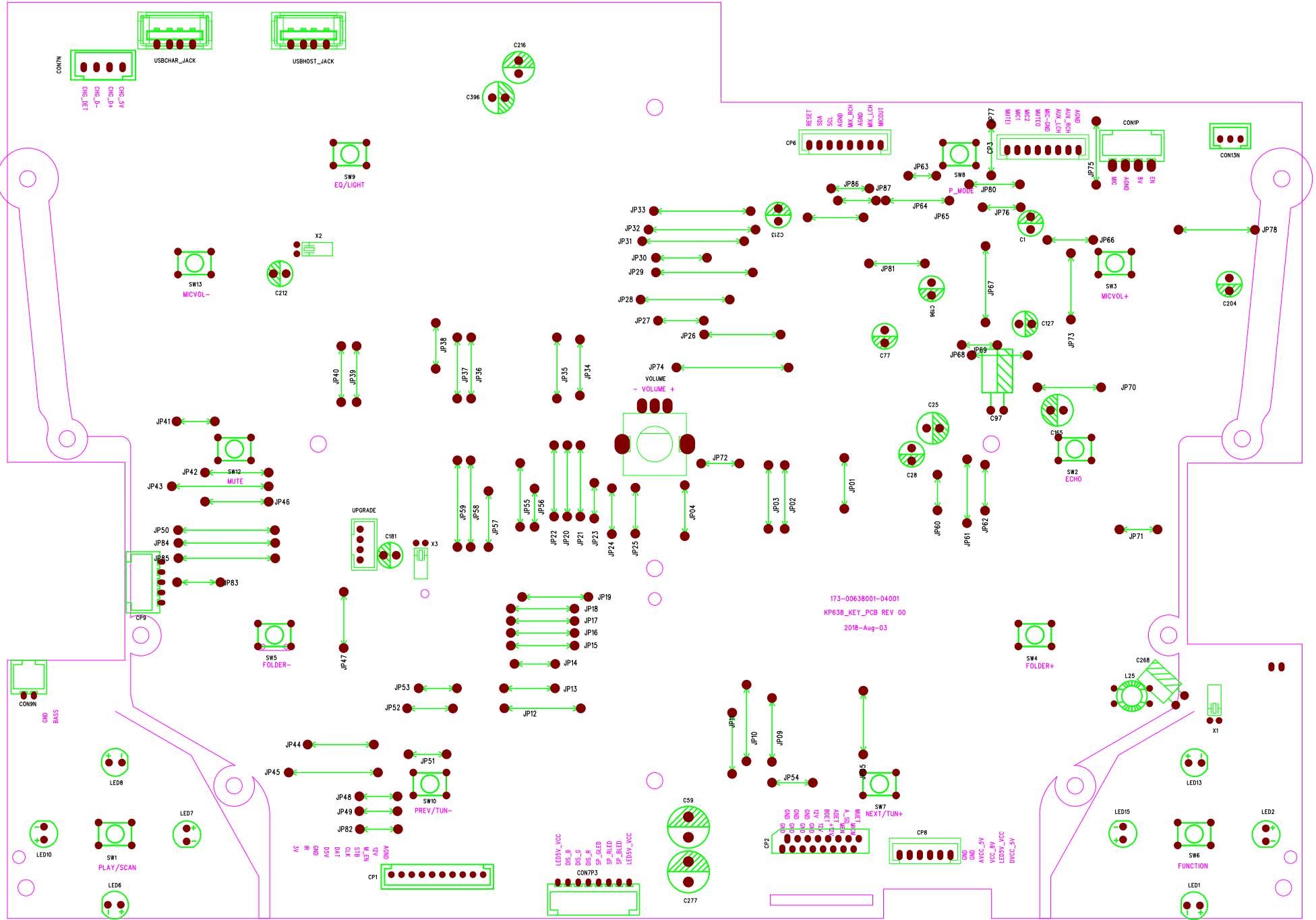
CHECKING:

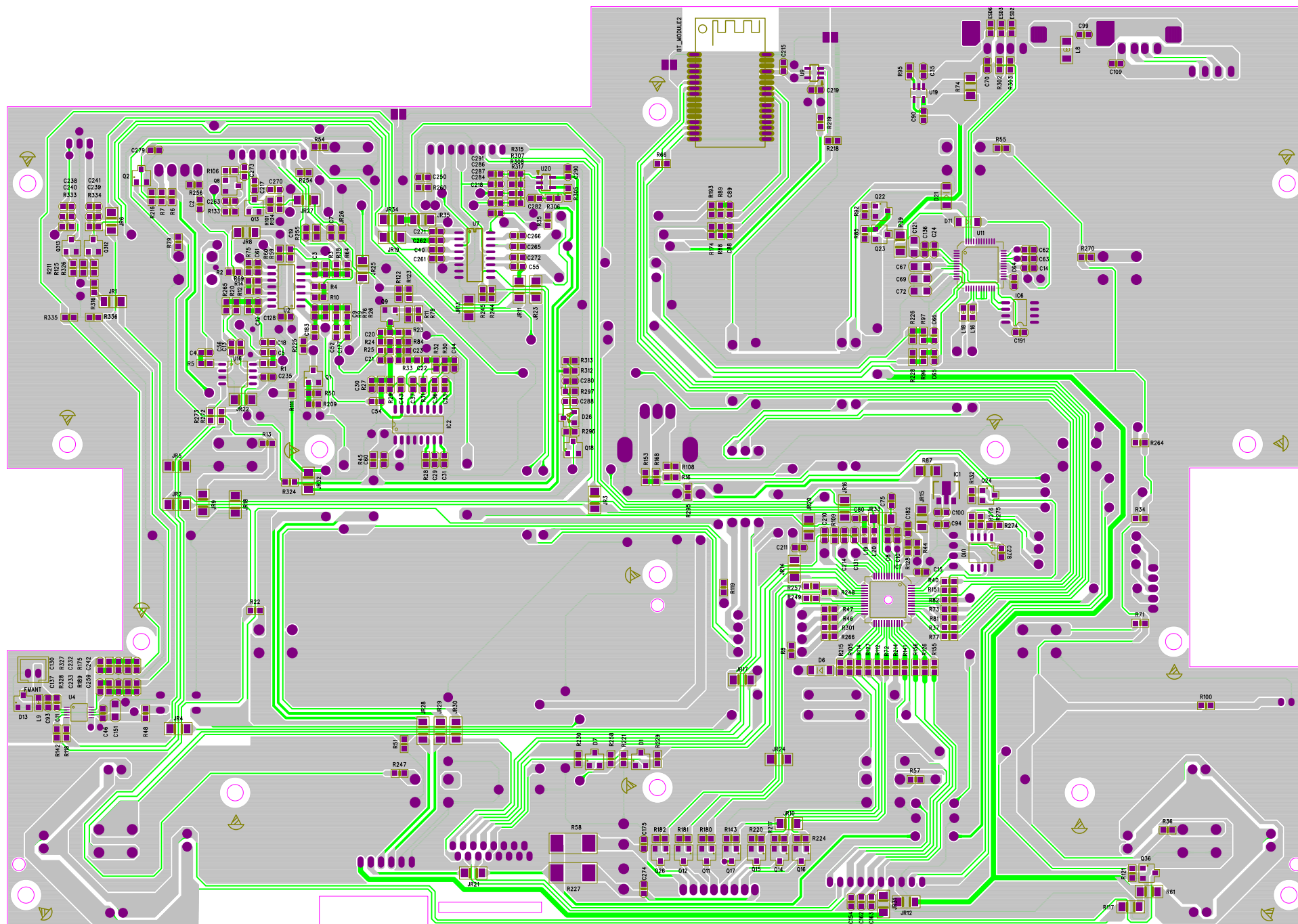
DATED:

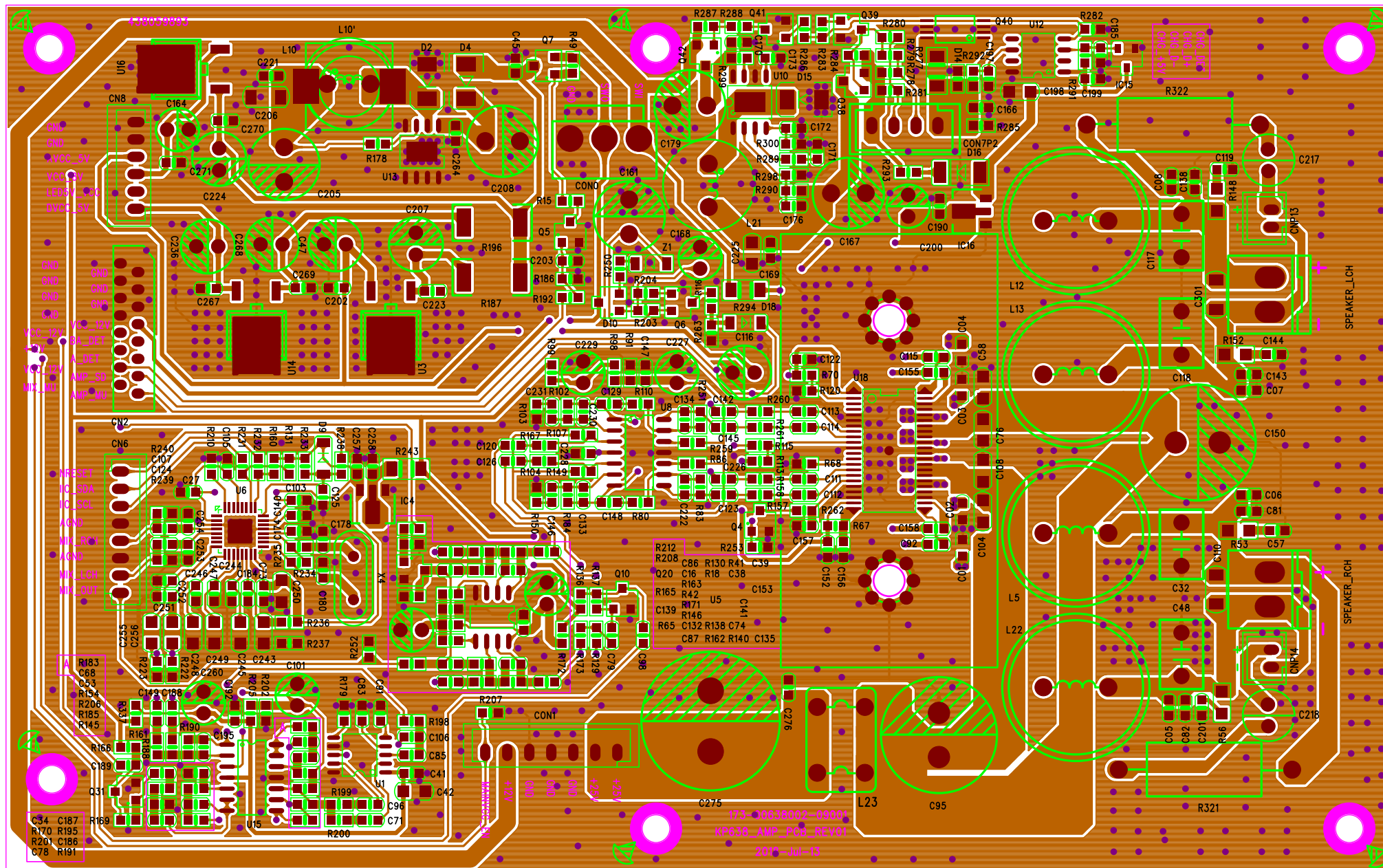
SHEET: 9 OF 9

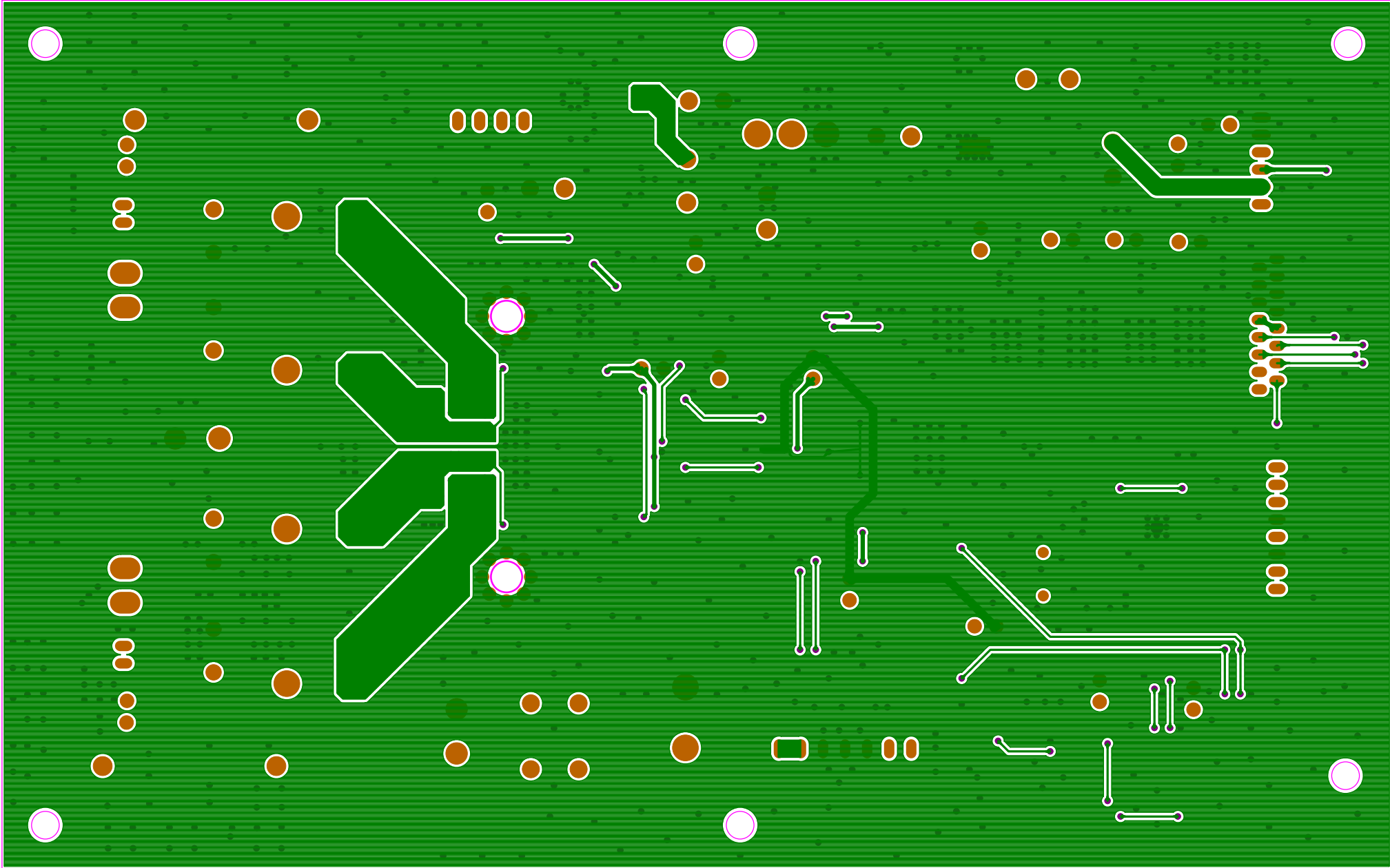
REV: A0

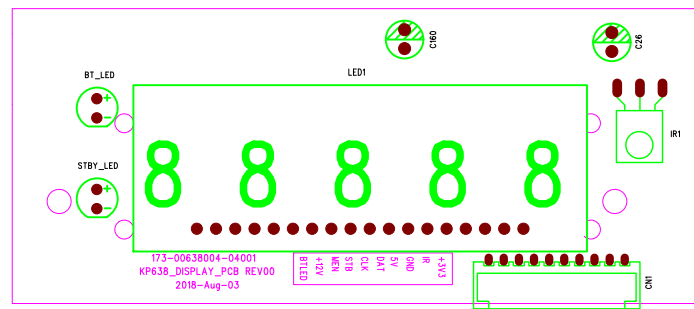
SIZE: A3

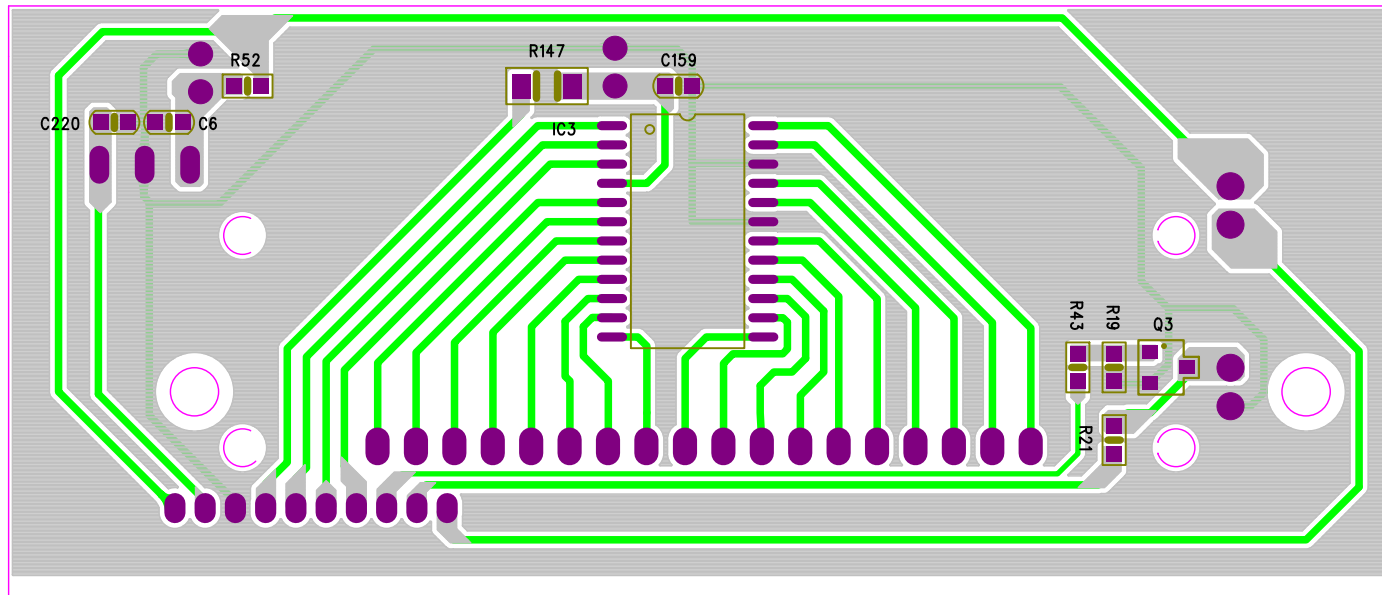


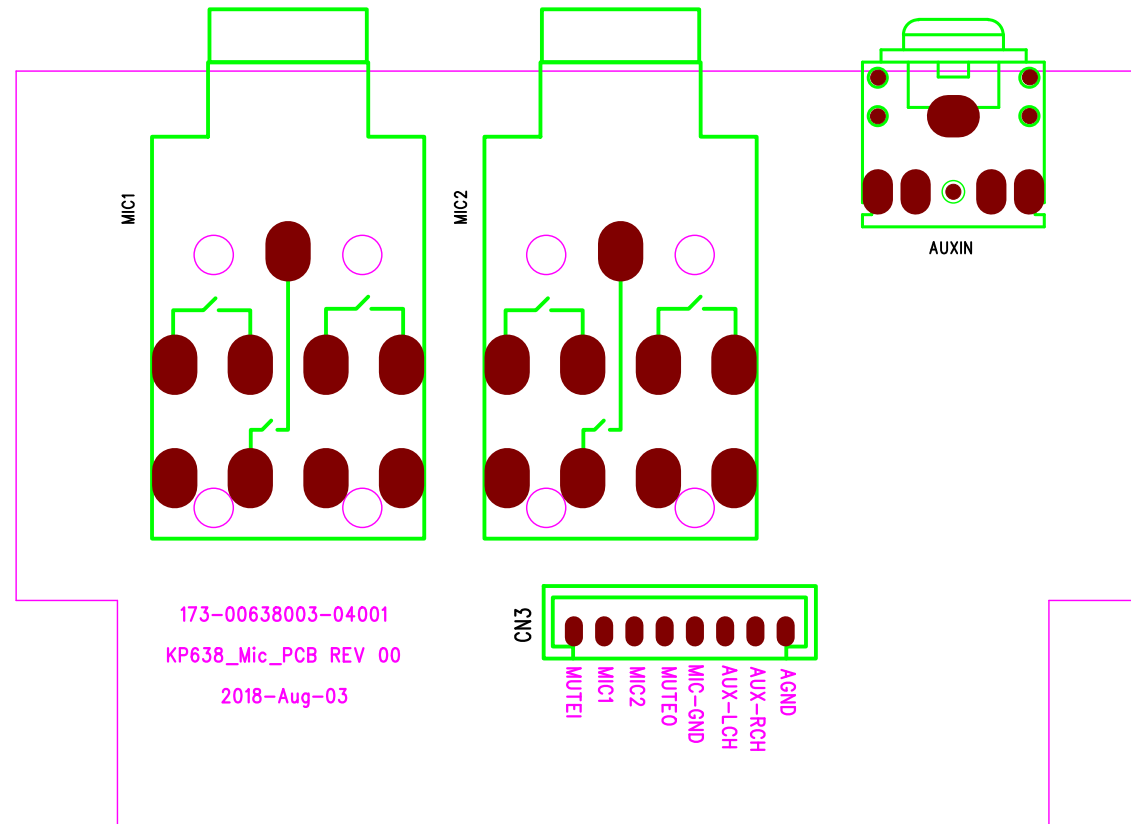


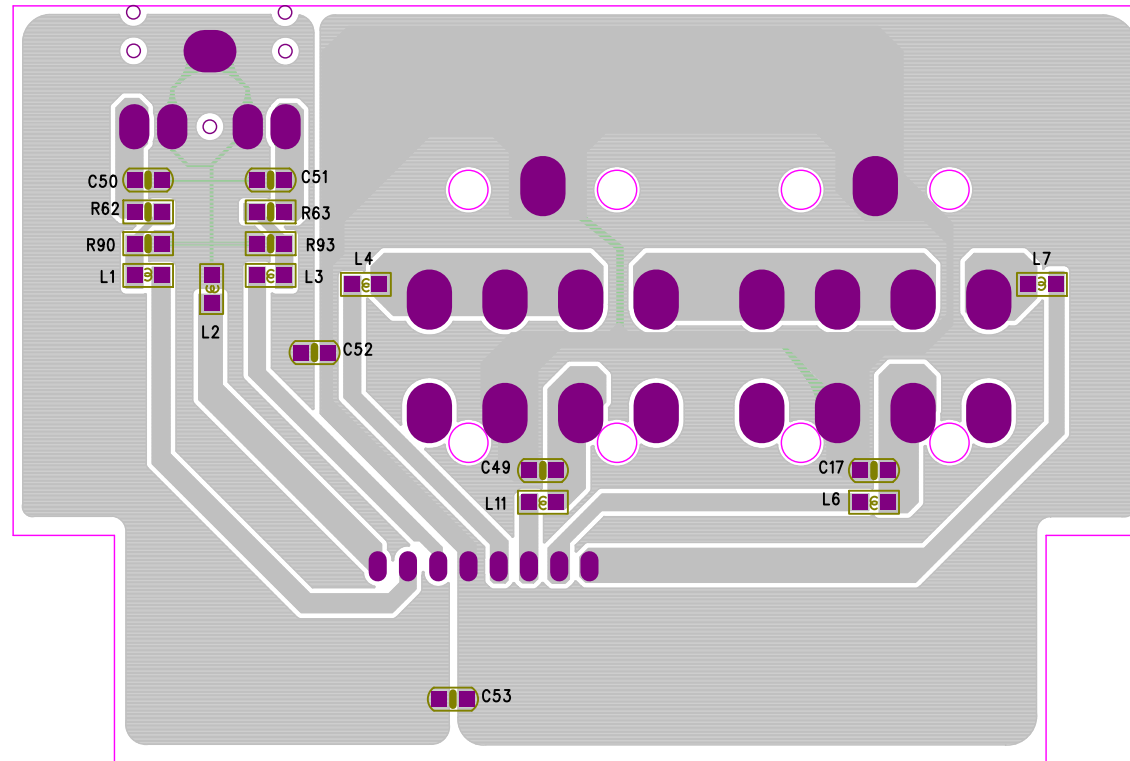


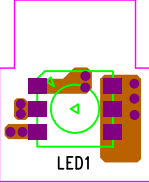






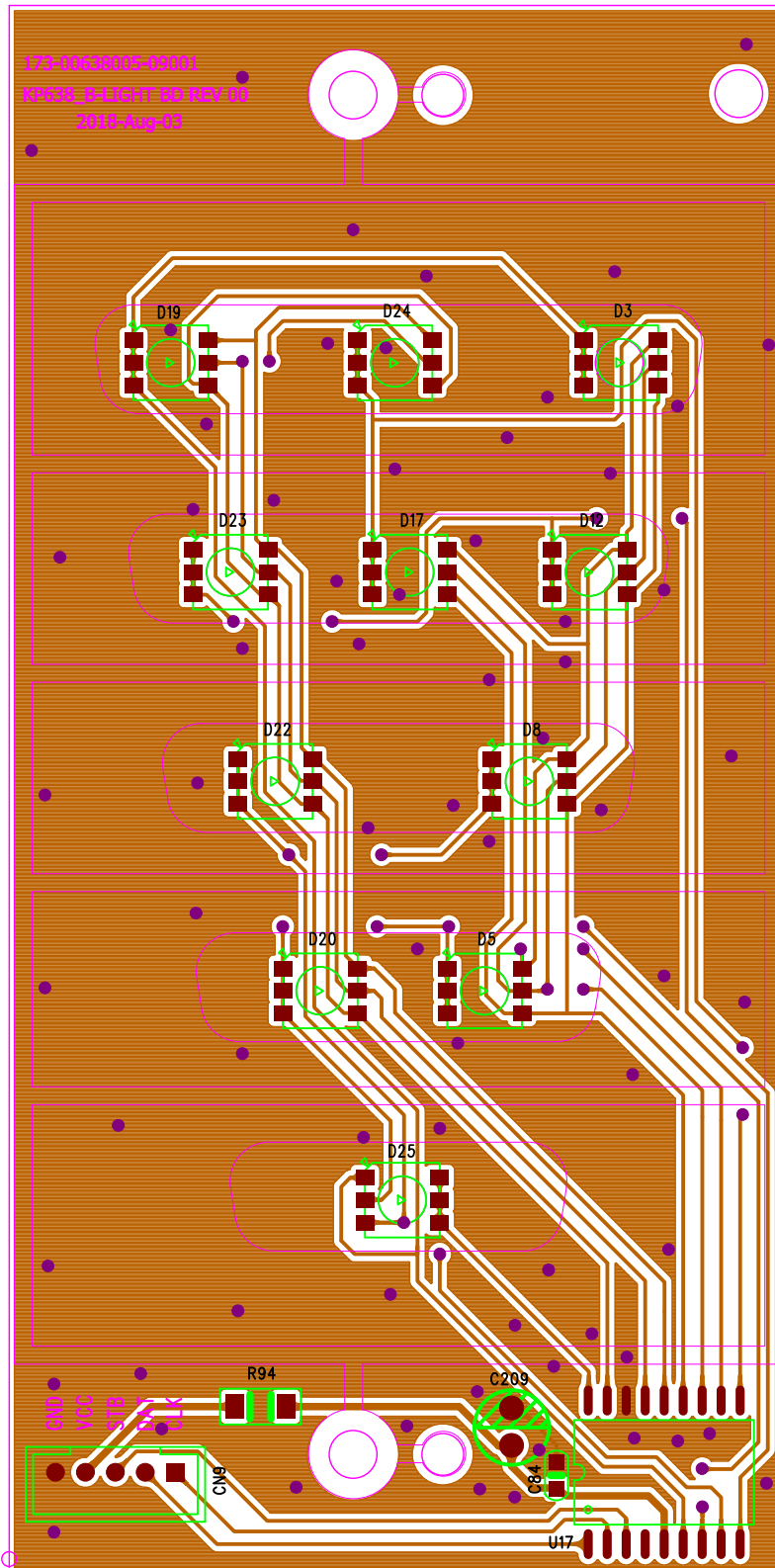


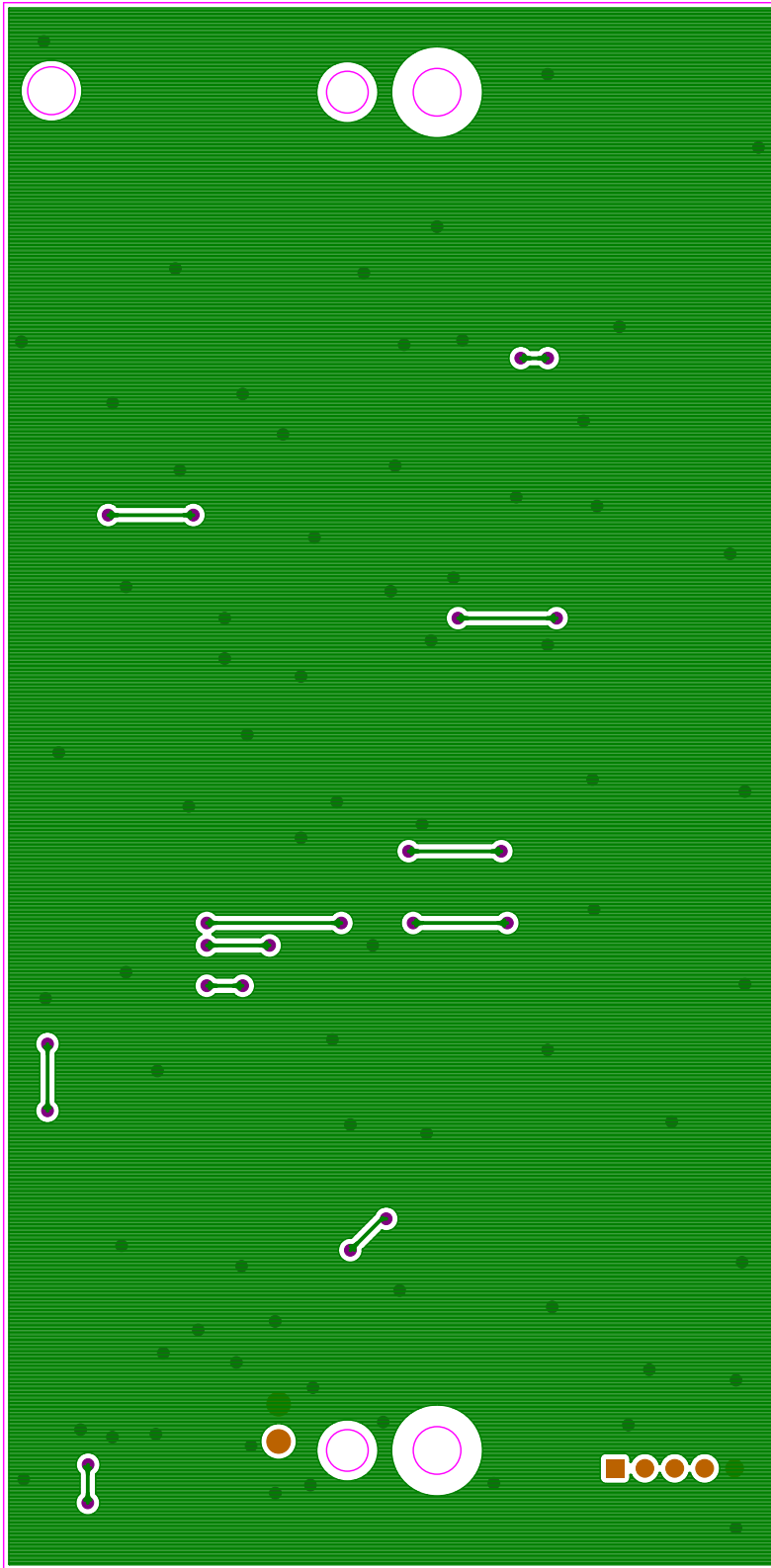


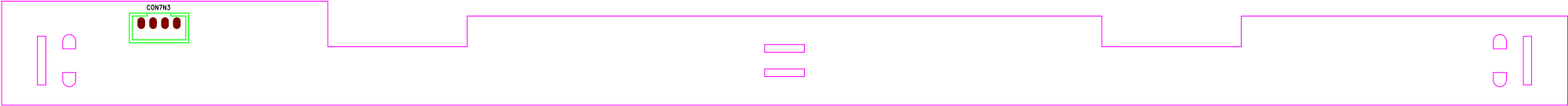


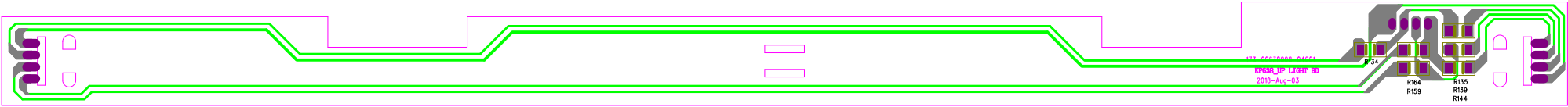


173-00638005-09001
KP638_B-LIGHT BD REV 00
2018-Aug-03

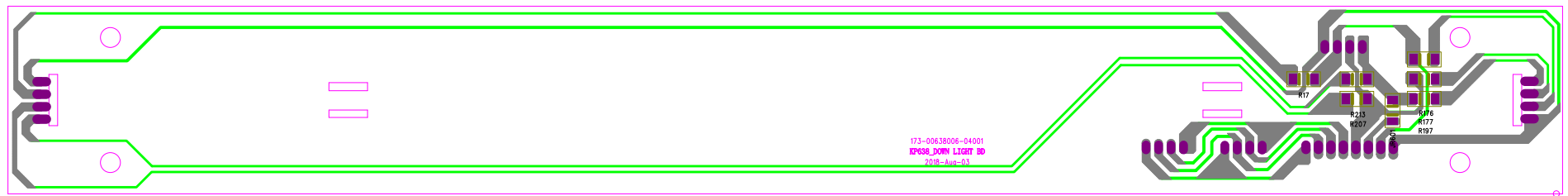


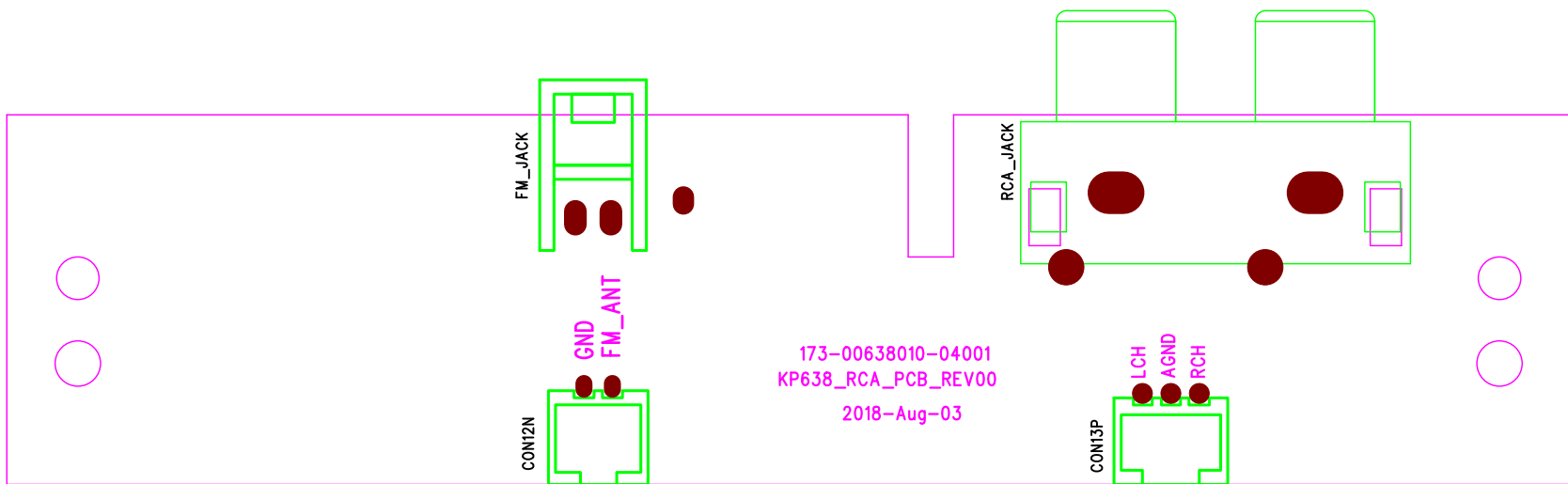


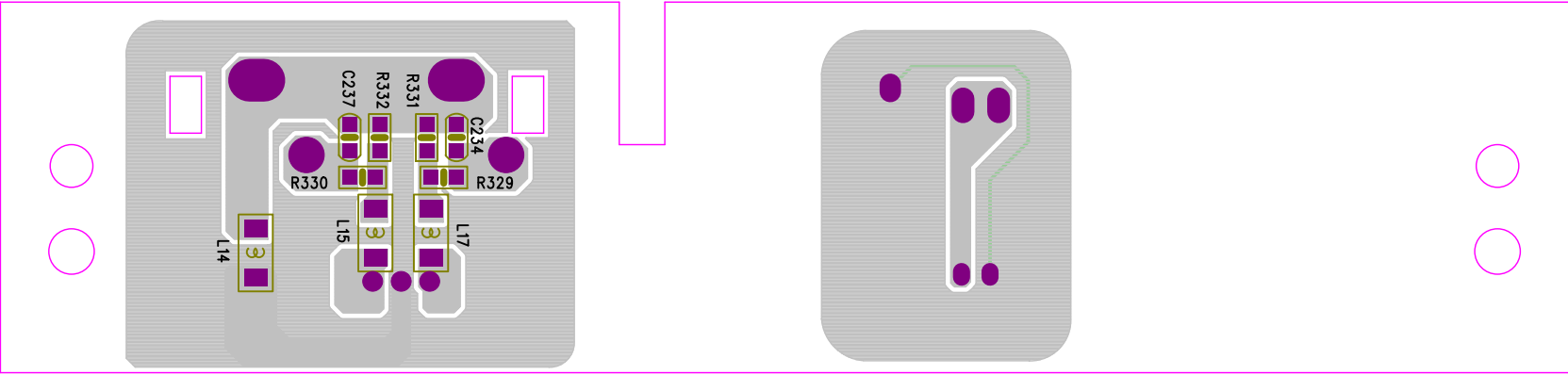












MODEL:kp638 EXPLODED VIEW PART LIST

NO.	DESCRIPTION	QTY
1	LOGO	1
2	BOTTOM SPEAKER GRILL	1
3	TOP SPEAKER GRILL	1
4	RUBBER FOOT	2
5	SCREW 3.0*20 KA BLACK	8
6	FRONT CABINET	1
7	LIGHT PCBA	2
8	LED LENS	5
9	LED PCBA-1	1
10	SCREW 3.0*10 PA ROHS	2
11	FRONT LENS	1
12	LED BAR	1
13	LED PCBA-2	1
14	SCREW 3.0*10 PA ROHS	4
15	SCREW 3.0*18 BA BLACK	8
16	FULL FREQUENCY SPEAKEY	2
17	TWEETER	2
18	SCREW 3.0*18 BA BLACK	8
19	RUBBER FOOT	2
20	SCREW 3.0*18 PA BLACK	2
21	RUBBER FOOT BRACKET	2
22	WOOD BOX	1
23	POWER-PCB	1
24	REAR METAL	1
25	SCREW 3.0*18 BA BLACK	8
26	AC SOCKET	1
27	SCREW 3.0*18 BA BLACK	8
28	HANDLE	2
29	MAIN PCBA	1
30	SCREW 3.0*10 PA	6
31	SCREW 3.0*10 PA	8
32	KEY PCBA	1
33	LEFT FUNCTION KNOB	1
34	RIGHT FUNCTION KNOB	1
35	TUN KNOB	1
36	TOP LENS	1
37	LED BAR	1
38	LED PCBA-3	1
39	DISPLAY LENS	1
40	LED PCBA	1

NO.	DESCRIPTION	QTY
41	SCREW 3.0*10 PA ROHS	2
42	LED BRACKET	1
43	SCREW 3.0*10 PA ROHS	2
44	KNOB LENS	2
45	SCREW 3.0*10 PWA ROHS	2
46	MIC-PCBA	1
47	SCREW 3.0*10 PA ROHS	2
48	RCA-PCBA	1
49	SCREW 3.0*20 KA BLACK	6
50	TOP CABINET	1
51	BASS SWITCH	1
52	POWER SWITCH	1
53	VOLUME KNOB	1
54	VOLUME COVER	1

